

# Sanitary Diaphragm Valve

Pneumatically Actuated

## Description

The type 615 is an extremely compact pneumatically actuated valve with many features which make them ideal for pharmaceutical and bio-processing applications.

## Standard Features

- Extremely compact design
- Sanitary internals
- Visual position indicator
- Maintenance-free piston actuator
- FDA compliant diaphragms
- Body material 316L stainless steel
- Triclamp®, O.D. Tubing, ISO, and DIN end connections
- Sizes 3/8" - 3/4"

## Available Options

- Electrical limit and proximity switches
- Stroke limiter

### Special connections

Hose barb, tube extensions, Swagelok®, Cajon VCR®, Ingold®, and others available upon request.

### Fabrications

Cluster valve assemblies for horizontal and vertical orientations, Bottle Sampling, and custom fabrications upon request.

### Materials

AL-6XN®, Hastelloy®, Titanium, and others available upon request.

## Typical Applications

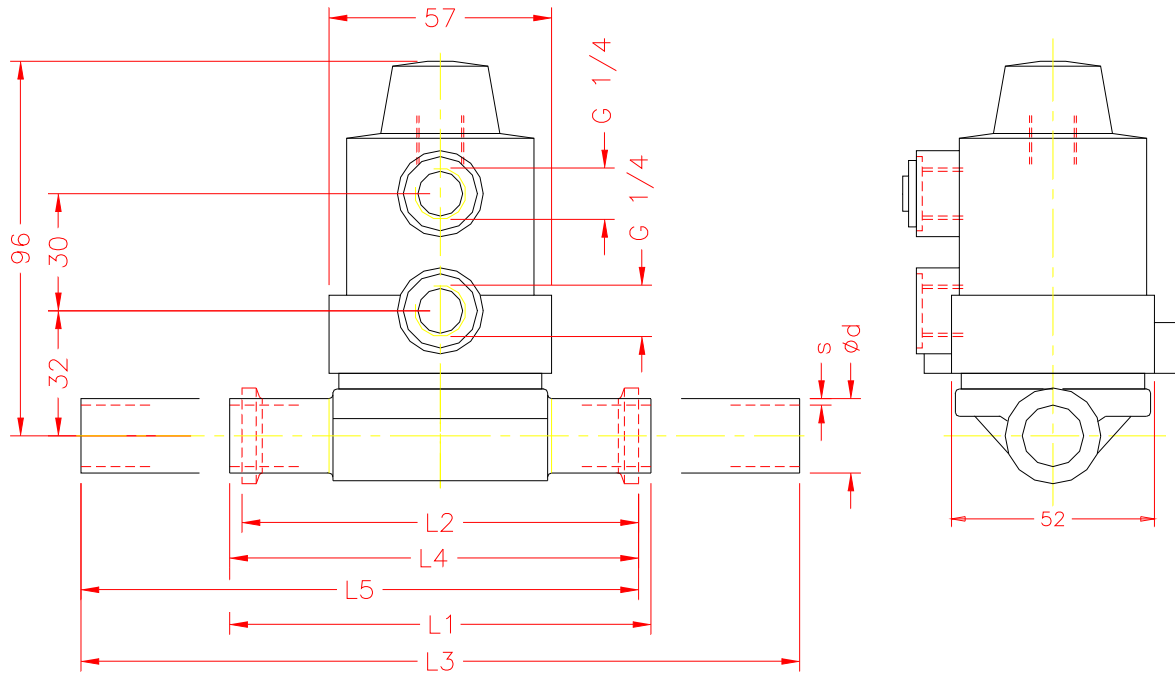
- Pharmaceutical manufacturing
- Bioprocessing
- Cosmetic
- Brewery Service
- Food and Beverage
- Semiconductor
- High Purity Chemicals



# Type 615



# Type 615 Dimensional Data



### Take Out Dimension For Standard Connections

Size	DN	Units	Con. Ref. No.		(59)	(80)	(94)	(93)	(95)
			$\phi d$	s	L1	L2	L3	L4	L5
3/8	10	mm	9.53	1.25	108.00	88.90	184.20	98.45	136.55
		in	0.375	0.049	4.252	3.500	7.252	3.876	5.376
1/2	15	mm	12.70	1.65	108.00	88.90	184.20	98.45	136.55
		in	0.500	0.065	4.252	3.500	7.252	3.876	5.376
3/4	20	mm	19.05	1.65	108.00	101.60	184.20	104.80	142.90
		in	0.750	0.065	4.252	4.000	7.252	4.126	5.626

- L1 = Connection Code 59 = Standard butt-weld
- L2 = Connection Code 80 = Standard clamp
- L3 = Connection Code 94 = Standard butt-weld extension (AWF)
- L4 = Connection Code 93 = Standard clamp X butt-weld
- L5 = Connection Code 95 = Standard clamp X butt-weld extension (AWF)

### Optional Spigot Dimensions

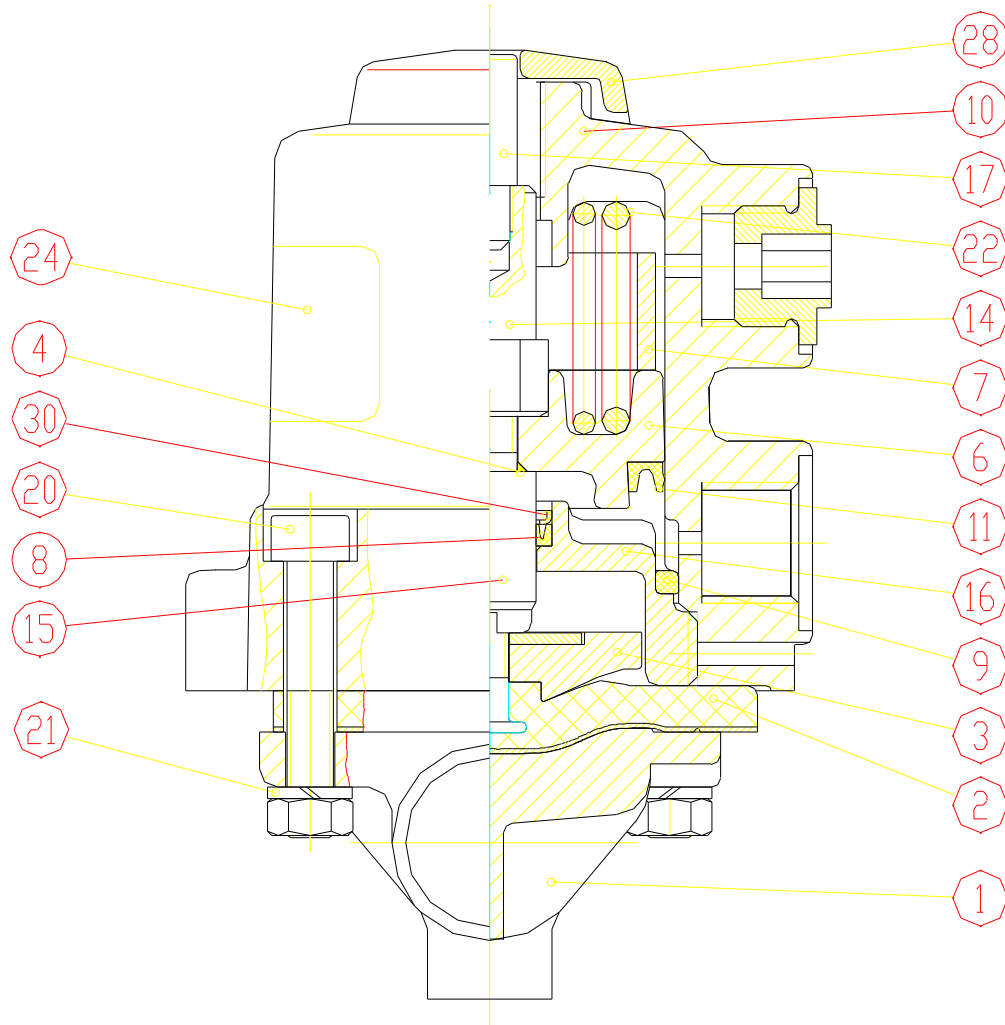
Connection Reference No.		DIN 0	DIN 11850 Series 1		DIN 11850 Series 2		DIN 11850 Series 3		ISO 60			
Size	DN	$L_1$	s	$\phi d$	s	$\phi d$	s	$\phi d$	s	$\phi d$		
3/8"	10	108	-	-	1	12	1.5	13	2	14	1.6	17.2
1/2"	15	108	1.5	18	1	18	1.5	19	2	20	1.6	21.3

### Drain Angles

Size	DN	Degrees
3/8"	10	60°
1/2"	15	65°
3/4"	20	70°

Drain angles are for BS O.D. Tubing only.

# Type 615 Spare Parts



ITEM	PART
1	Valve Body
2	Diaphragm
3	Compressor
4	O-Ring
6	Piston Assembly
6.2	<b>Indicator Spindle</b>
7	Distance Sleeve
8	Lip Ring
9	O-Ring
10	<b>Actuator Housing</b>
11	Lip Ring
14	<b>Operating Spindle</b>
15	Valve Spindle
16	Guide Piece
17	<b>Indicator Spindle</b>
20	Hexagon Socket
	Bolt
21	Washer
22, 26	Spring
28	Cap
29	Stroke Limiter (accessory)
30	Washer



**GESINT S.R.L.**

Via Perosi, 5

20010 Bareggio (MI) - ITALY

Tel. 02/9014633 - 335/6282615

Fax 02/90362295

e-mail: [info@gesintsrl.it](mailto:info@gesintsrl.it)

[WWW.GESINTSRL.IT](http://WWW.GESINTSRL.IT)